

# PESQUISA ANUAL DE CONJUNTURA ECONÔMICA DO TURISMO

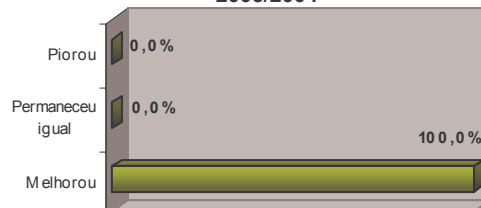


Março de 2005, ano I, número 1

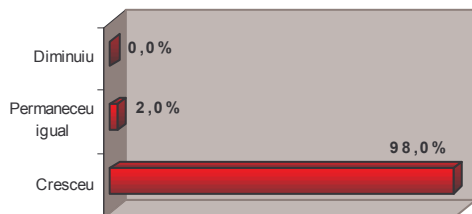
**Operadoras - Economia Brasileira  
2004/2003**



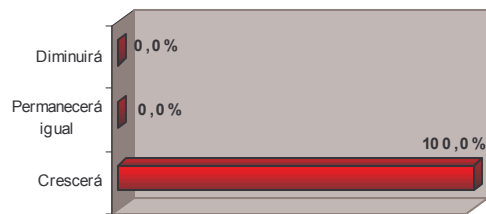
**Operadoras - Economia Brasileira  
2005/2004**



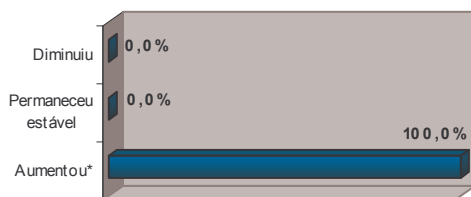
**Mercado de Operadoras 2004/2003**



**Mercado de Operadoras 2005/2004**

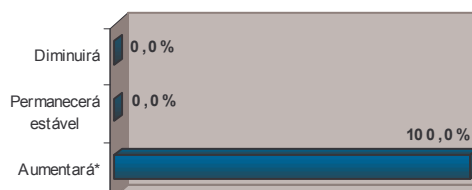


**Operadoras - Faturamento Bruto  
2004/2003**



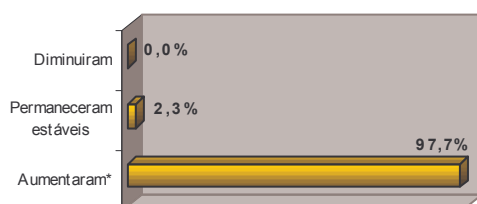
\* Aumento verificado: 47%

**Operadoras - Faturamento Bruto  
2005/2004**



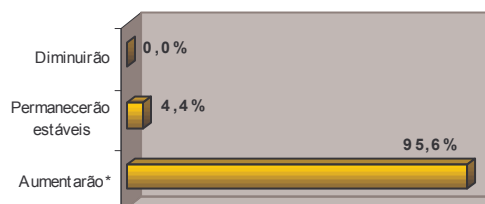
\* Estimativa de aumento de 24,8%

**Operadoras - Postos de Trabalho  
2004/2003**



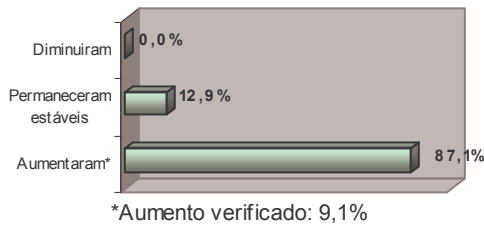
\*Aumento verificado: 28,5%

**Operadoras - Postos de Trabalho  
2005/2004**

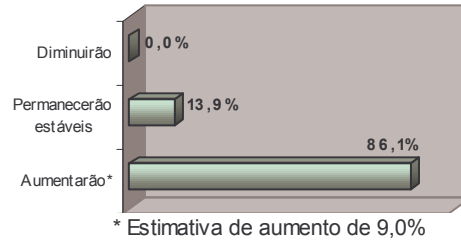


\* Estimativa de aumento de 25,0%

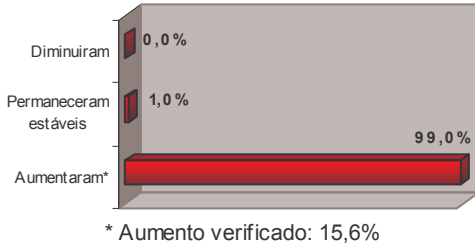
**Preços Cobrados 2004/2003**



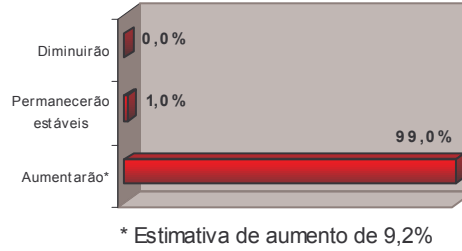
**Preços Cobrados 2005/2004**



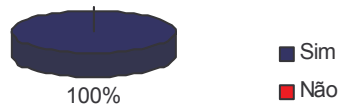
**Custos Operacionais 2004/2003**



**Custos Operacionais 2005/2004**



**Intenção de realizar investimentos - 2005**



**Barreiras à expansão dos negócios**

- 1 - Menor relevância
- 2 - Maior Relevância

